



REXTAR-X

The ultimate dental X-ray



Incomparable & Superior Quality

More Clear & More Sharp X-ray Image

Product	REXTAR X	General Portable X-ray
X-Ray Tube	Special (Toshiba D-041)	General
Tube Voltage / Current	70kv / 2mA	60kv / 1 or 2mA
Focal Spot	0.4mm	0.8mm
Target Angle	12°	20°

REXTAR-X

Totally different Portable X-ray

COMPACT & LIGHT

- One-hand operation
- Light weight, Full charged battery provides 300 times exposure



SMART & EASY OPERATION

- With smart exposure control system, proper exposure value and time can be memorized for future use to save time to reset every case and patient



Excellent compatibility

- Whatever you have as a detector, Rextar X is compatible with all range of sensors, film and PSP (Phosphor plates)



DIGITAL Imaging Creative
POSDION
www.posdion.com

Contact Posdion Co.,Ltd.
Tel : +82-2-3664-2874 (Seoul, Korea) E-mail : info@posdion.com
Website : www.posdion.com

Reliable Safety

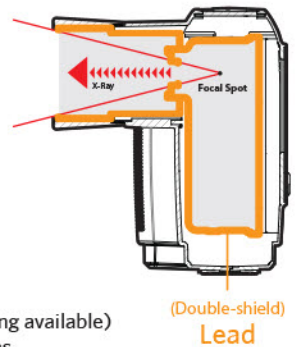
Rextar-X is designed with safety in mind. Built-in leaded Double-Shield in Rextar-X ensures that leakage from the x-ray source itself is almost eliminated; protecting the operator who is close to the device.



US FDA Standard	
0.88 mGy/h at 100 cm from the focal spot	
Rextar X Test condition : 70kv / 2mA, 1.3sec	
Detected point	Rextar X 1,2,3 Average mGy
A	Not detected
B	0.00007751
C	0.00007699
D	0.00010751

Certified Safety

Battery powered handheld (portable) X-ray



Application

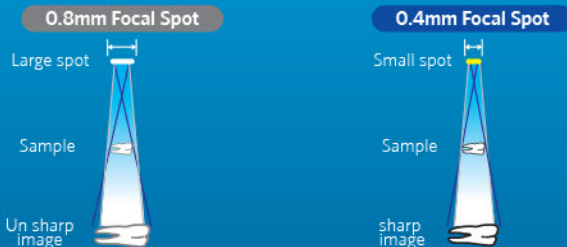
Implant & Endodontic surgery (Real-Time checking available)
Remote areas, military and humanitarian missions,
dental care of patients with mobility limitation



How to choose the best X-RAY device?

Focal Spot

Focal spot size is important factor to get a clear image in any X-ray. By using Toshiba D-041 tube, Rextar X provides smaller focal spot (0.4mm) and smaller divergence angle of X-ray (12°). You will experience the most sharp & clear images



General Focal Spot

0.8mm



Rextar X Focal Spot

0.4mm

Tube

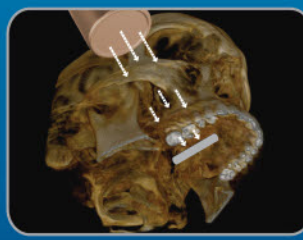
Voltage

Tube voltage is the power of penetrating the bone. In the case of cheek bone, 60Kv could be the reason to cause the unclear image as the tube power is not enough to penetrate.

Current

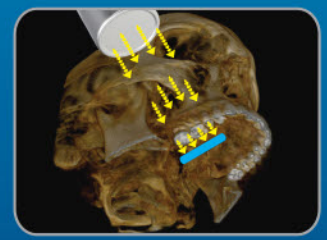
Current is a flow of electric charge which means the quantity. In order to get a clear image, the power and current of tube is important factor.

Optimized voltage & current generate superior image of maxilla



General Voltage/Current

60Kv / 1-2mA



Rextar X Voltage/Current

70Kv / 2mA